



# TESON READY-TO-USE TILE GROUT (TM-401)

**Description:** TESON READY-TO-USE TILE GROUT is an advanced, ready-to-use pre-mixed tile grout. It deliver excellent workability, no sagging, durable and with excellent abrasion resistance properties.

## Application:

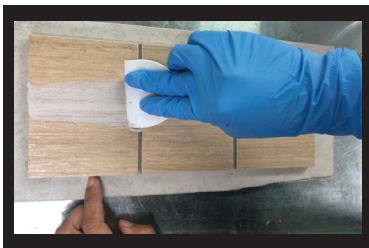
- Ceramic tile
- Residential and commercial
- Floor and wall
- Interior application
- Re-grouting application
- Joint : 1.5 to 6 mm

## Advantages:

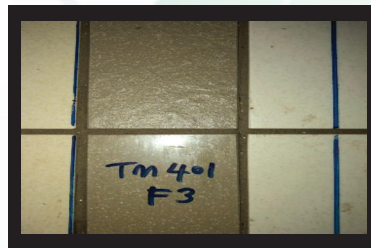
- Easy to use and clean per ANSI 118.3 standard
- No mixing required
- Tough, durable, abrasion resistance
- No sagging per ANSI 118.3 standard
- Excellent stain resistance
- Excellent abrasion per EN 12808-2 standard



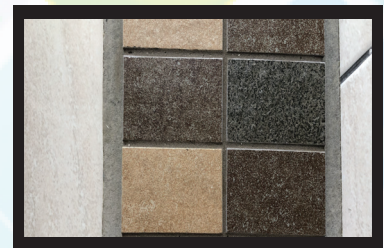
## Application Reference:



Apply TM-401



No Sag, No Streak



TM-401 Mock Up

## Packaging:

PRODUCT CODE	PACKING SIZE	PACKING FORM	COLOUR
TM-401/500G	500G	Container	Brown
TM-401/1.3K	1.3KG	Container	Brown



# TESON READY-TO-USE TILE GROUT (TM-401)

Teson Ready-To-Use Tile Grout is an advanced, ready-to-use pre-mixed tile grout. It deliver excellent workability, no sagging, durable and with excellent abrasion resistance properties.

## APPLICATION:

- Ceramic tile
- Residential and commercial
- Floor and wall
- Interior application
- Re-grouting application
- Joint : 1.5 to 6 mm

## ADVANTAGES:

- Easy to use and clean per ANSI 118.3 standard
- No mixing required
- Tough, durable, abrasion resistance
- No sagging per ANSI 118.3 standard
- Excellent stain resistance
- Excellent abrasion per EN 12808-2 standard

## PRODUCT APPLICATION:

- Before starting to grout, remove spacers and debris in grout joint and remove dust and dirt using a wet sponge. Do not leave water standing in joints.
- Clean tile surface with a damp sponge. Spread with a sharp, firm rubber grout float or wall float for narrow wall joints.
- To remove excessive grout, hold the float at a 90° angle and pull it at 45° angle diagonally across the joints to avoid pulling the material out of grout joint.
- For best result, work in area less than 2 sq-m and perform initial cleaning immediately.
- Initial cleaning within 10-15 minutes, Teson Ready-To-Use Tile Grout requires little water to clean via damp grout sponge.
- Do not allow water to sit on grout surface. Excessive water used during cleanup can interfere with product curing.
- If minor haze is present after initial cleaning, wait till second cleaning to address initial haze or approximate 4 to 6 hours.
- Use a damp sponge to remove remaining grout haze when the grout joints are firm. Haze can remove with isopropyl alcohol or house cleaner carefully if necessary.

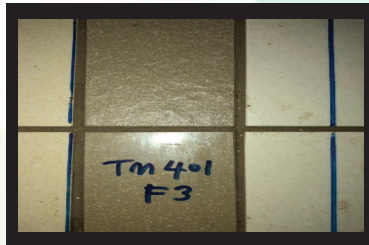
## CURING AND SETTING TIME:

- Ready to light traffic : 24 hours
- Tack free time : 5 hours
- Ready for heavy traffic : 72 hours
- Dirt, stain resistance, food spills, house cleaner : 7 days
- Fully cure : 28 days

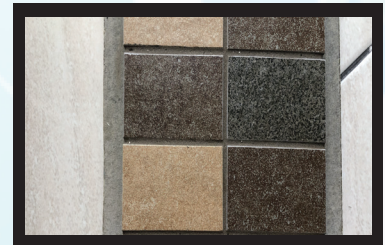
## APPLICATION REFERENCE:



Apply TM-401



Mosaic Installation



Counter Top Installation

## COVERAGE:

- Tile Size : 15 cm X 15 cm X 6 mm :
1. 3 sq-m for 3 mm joint width per kg
  2. 1.5 sq-m for 6 mm joint width per kg

## LIMITATIONS:

- Not for use in steam room.
- Not recommended for pebble floor.
- Not for submerged application.
- Not replacement for waterproofing membrane application.

## PACKAGING:

PRODUCT CODE	PACKING SIZE	PACKING FORM	COLOUR
TM-401/500G	500G	Container	Brown
TM-401/1.3K	1.3KG	Container	Brown

## SHELF LIFE:

Sealed container are guaranteed to be for one year if store at room temperature without expose direct to sunlight.

## PRECAUTION:

### Health & Safety

Teson Ready-To-Use Tile Grout is safe to use as it is non-flammable and non-toxic. However, it is still advisable to follow good working practice and use only in well-ventilated areas.

## LIMITED WARRANTY:

Seller and manufacturers only obligation shall be replacement of such quantity of product proved to be defective. All advice given herewith is to be the best of knowledge, true and accurate. All recommendations or suggestions are made without guarantee. Since the condition of use are beyond our control, the seller or manufacturer shall not be liable for any injuries, loss or damage, direct or consequential arising from the use of or the failure of the product. Before using, user shall determine the suitability of the product for his intended use and user assumes all risk and liability.